



LP MOTORCYCLE • SLA BATTERY

LTZ14-S (12V 11.2Ah)

DIN: 51102

11/03/2024

Description

The motor battery LTZ14-S, 12 volt, 11,2 Ah, is a starter battery with AGM technology. The LTZ14-S is already factory activated (filled and charged) and therefore ready to use at delivery. This lead-acid battery is leak-proof and maintenance free. Can be installed in tilted position up to 90°. The LTZ14-S is a real allrounder and suitable for seasonal use and short distances.

Performance

Rated Voltage	12
Nominal Capacity	11.2Ah (10hr)
CCA EN	220

Dimensions / Weight

Dimensions	Length	150 mm
	Width	88 mm
	Container Height	110 mm
	Total Height	110 mm
Net. Weight	3.86 Kg	
Weight acid	0.68 Kg	
Terminal	F	
Layout	1	

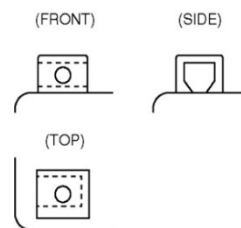
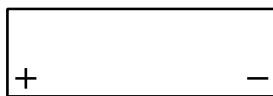


Features

- Absorbent Glass Mat technology
- Advanced starting power
- Excellent vibration resistant
- 100% maintenance free
- Factory activated, ready to use!

Layout

Terminal



(Note) All above information shall be changed without prior notice, Landport Batteries reserves the right to explain and update the latest information.