



LP MOTORCYCLE • SLA BATTERY

# LT14B-4 (12V 12Ah)

DIN: 51203

02/04/2024

## Description

The motor battery LT14B-4, 12 volt, 12 Ah, is a starter battery with AGM technology. The LT14B-4 is already factory activated (filled and charged) and therefore ready to use at delivery. This lead-acid battery is leak-proof and maintenance free. Can be installed in tilted position up to 90°. The LT14B-4 is a real allrounder and suitable for seasonal use and short distances.

## Performance

Rated Voltage	12
Nominal Capacity	12Ah (10hr)
CCA EN	175

## Dimensions / Weight

Dimensions	Length	150 mm
	Width	70 mm
	Container Height	145 mm
	Total Height	145 mm
Net. Weight	4.14 Kg	
Weight acid	0.82 Kg	
Terminal	F	
Layout	1	

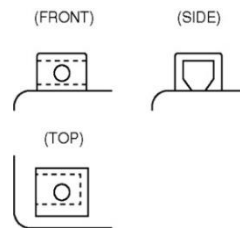
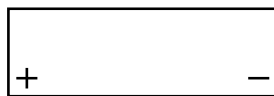


## Features

- Absorbent Glass Mat technology
- Advanced starting power
- Excellent vibration resistant
- 100% maintenance free
- Factory activated, ready to use!

## Layout

## Terminal



(Note) All above information shall be changed without prior notice, Landport Batteries reserves the right to explain and update the latest information.