



LFP7Z (12.8V 2.4Ah)

Description

The motor battery LFP7Z, 12,8 volt, 2,4 Ah, is a starter battery with lithium LiFePO4 technology. The LFP7Z is completely sealed, 100% maintenance free and ultra-safe in use. This motor battery is ready to use and can be installed in multiple positions, even 180°. The LFP7Z is a little powerhouse of top quality and suitable for powersports vehicles where every gram or centimeter matters.

Performance

Rated Voltage	12.8
Nominal Capacity	2.4Ah (10hr)
Energy	28.8Wh
CCA EN	150

Dimensions / Weight

Dimensions	Length	107 mm
	Width	56 mm
	Container Height	85 mm
	Total Height	85 mm
Net. Weight	0.60 Kg	
Terminal	F	
Layout	25	

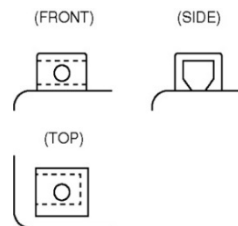
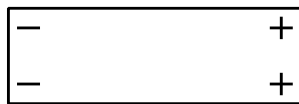


Features

- Lithium LiFePO4 technology
- Ultimate starting power
- Extreme cycle life (up to 2.000 charge cycles)
- Ultra-light weight (1/3 of similar lead-acid battery)
- Very low self-discharge
- Install in any position
- 100% maintenance free
- Ready to use!

Layout

Terminal



(Note) All above information shall be changed without prior notice, Landport Batteries reserves the right to explain and update the latest information.